



# OUR GUIDE FOR EMPLOYERS



# WELCOME

As a sixth form college, we recognise that we have a unique responsibility and opportunity to foster the ambitions of young people. Our students are looking for the opportunities to experience the energy and challenge of the workplace by interacting with professional role models.

**“AT MONOUX WE WORK TO ACHIEVE REMARKABLE THINGS WITH TALENTED YOUNG PEOPLE WHO, DURING THEIR TIME WITH US, WILL REACH ABOVE AND BEYOND A MULTITUDE OF SOCIAL AND ECONOMIC BARRIERS”.**

We want to work in partnership with organisations and build relationships with employers.

Most of our students progress to university and often they are the first generation in their family to follow this route. All our students are on (or working towards) Level 3 programmes of study – both A Levels and vocational courses.

# BACKGROUND



Sir George Monoux Sixth Form College is located in the London Borough of Waltham Forest, in Walthamstow, E17.

The college attracts a high proportion of students from areas of significant diversity as well as social and economic limitations, with many recruited from the neighbouring boroughs of Newham, Hackney, Haringey and Enfield. All of the main boroughs from which we draw students are amongst the very most disadvantaged areas nationally.

Waltham Forest is currently ranked as one of the most ethnically diverse London boroughs and is the first London Borough of Culture (2019).

**“THROUGH OUR WORK WITH EMPLOYERS IN LONDON, WE WILL PLAY A VITAL ROLE IN PROPELLING YOUNG PEOPLE FROM DISADVANTAGE TO PROFESSIONAL SUCCESS.”**



# HOW DO WE WANT TO WORK WITH EMPLOYERS?

All our students join one of six career pathways. We give priority to setting employability and personal development goals for each student.

We seek to work flexibly with employers; and below are some examples of what we believe can make a difference.

- Work experience
- Employment visits
- Work based projects
- Presentations and Talks
- Careers & Employment Fairs
- Interviewing and CV workshops
- Visits to the workplace
- Mentoring
- Master classes to introduce students to industry practice



**“HIGHLY ENRICHED AND PERSONALISED ACADEMIC PATHWAYS.”**

# PATHWAYS

A photograph of three diverse students sitting at a desk in a classroom, working on computers. The student in the foreground is a young woman with long dark hair, looking towards the right. The student in the middle is a young woman with short curly hair, smiling at the camera. The student in the background is a young man with glasses and a beard, looking at his computer screen. The background shows a bulletin board with various papers and a poster.

In 2017, we made an innovative decision to organise our courses into six distinctive pathways. We believe that successful education is fuelled by students having a clear sense of direction and purpose, an inquiring mind and an interest in learning.

Our six pathways are:

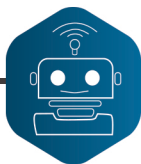
- Creative Pathway
- Digital Pathway
- Enterprise and Management Pathway
- Legal and Finance Pathway
- Science and Health Pathway
- Society and Culture Pathway

Each pathway offers a unique blend of activities, visits, speakers, workshops and trips to complement classroom-based lessons.

# OUR SIX LEARNING PATHWAYS



CREATIVE



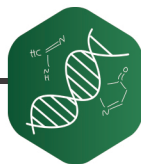
DIGITAL



ENTERPRISE & MANAGEMENT



LEGAL & FINANCE



SCIENCE & HEALTH



SOCIETY & CULTURE

## CREATIVE PATHWAY

For students seeking to develop creative skills and work in creative industries.

### COURSES

- Acting
- Art and Design
- Dance
- Games Design
- Graphic Design
- Media
- Music
- Performing Arts
- Photography

### EMPLOYERS WE CURRENTLY WORK WITH:

- Wieden+Kennedy
- The Arts Emergency Fund
- The Barbican Garden Party
- School Liaison Film Making Competition
- The Creative Mentor Network
- The London Borough of Waltham Forest
- The Walthamstow International Film Festival (WIFF)

## DIGITAL PATHWAY

For students wishing to develop the skills to work within the world of digital applications and information technology.

### COURSES

- ICT
- Information and Creative Technology

### EMPLOYERS WE CURRENTLY WORK WITH:

- Accenture
- Colorintech
- Bletchley Park
- Waltham Forest Council
- Techmix



## ENTERPRISE & MANAGEMENT PATHWAY

For students interested in enterprise and management across a broad range of employment sectors.

### COURSES

- Business
- Business & Enterprise
- Business & Legal Studies
- Sport
- Travel & Tourism

### EMPLOYERS WE CURRENTLY WORK WITH:

- HSBC
- Eurostar
- Susan Costi
- British Airways
- Stansted Airport
- Boulevard Events
- St Johns Ambulance

## SCIENCE & HEALTH PATHWAY

For those interested in the role that science and health can play in the world.

### COURSES

- Applied Science
- Biology
- Chemistry
- Health & Social Care
- Physics
- Psychology

### EMPLOYERS WE CURRENTLY WORK WITH:

- Transport for London
- Pathway to Engineering
- Airbus Defence and Space
- Lewisham Occupational Therapy Unit

## LEGAL & FINANCE PATHWAY

For students seeking to develop the skills to work in law and finance related employment sectors.

### COURSES

- Business
- Economics
- Financial Studies
- Further Maths
- Law
- Maths

### EMPLOYERS WE CURRENTLY WORK WITH:

- Baker McKenzie
- The Law Workshop
- Price Waterhouse Coopers
- London Metropolitan University - The Big Idea Challenge

## SOCIETY & CULTURE PATHWAY

This pathway provides an understanding of our global society and leads to careers focused on the work of communities and organisations.

### COURSES

- English Language
- English Language & Literature
- English Literature
- Film Studies
- French
- Geography
- Government & Politics
- History
- Journalism
- Religious Studies
- Sociology
- Spanish

### EMPLOYERS WE CURRENTLY WORK WITH:


- The Law Workshop
- University of East London
- Price Waterhouse Coopers
- London Metropolitan University - The Big Idea Challenge


# GET IN TOUCH WITH US

You can contact our Pathway Leaders directly; their contact details are below:


 Creative  
Christopher Leach:  
[christopher.leach@sgmc.ac.uk](mailto:christopher.leach@sgmc.ac.uk)

 Digital  
Shiraz Ahmed:  
[shiraz.ahmed@sgmc.ac.uk](mailto:shiraz.ahmed@sgmc.ac.uk)

 Enterprise & Management  
Barbara Nearchou:  
[barbara.nearchou@sgmc.ac.uk](mailto:barbara.nearchou@sgmc.ac.uk)

 Legal & Finance  
Sonia Virdee:  
[sonia.virdee@sgmc.ac.uk](mailto:sonia.virdee@sgmc.ac.uk)

 Science & Health  
Jerrelle Karakanna:  
[jerrelle.karakanna@sgmc.ac.uk](mailto:jerrelle.karakanna@sgmc.ac.uk)

 Society & Culture  
Jeremy Latham:  
[jeremy.latham@sgmc.ac.uk](mailto:jeremy.latham@sgmc.ac.uk)

Sir George Monoux College  
190 Chingford Road,  
London, E17 5AA

 0208 523 3544 ext. 3426

 [careers@sgmc.ac.uk](mailto:careers@sgmc.ac.uk)

 [www.sgmc.ac.uk](http://www.sgmc.ac.uk)

The college has a dedicated Careers and Employability team who can be contacted on: [careers@sgmc.ac.uk](mailto:careers@sgmc.ac.uk) or by phone on 0208 523 3544 ext. 3426.

You can also contact our Principal, Dave Vasse:

 [david.vasse@sgmc.ac.uk](mailto:david.vasse@sgmc.ac.uk)

 020 8523 3544 ext. 3414

